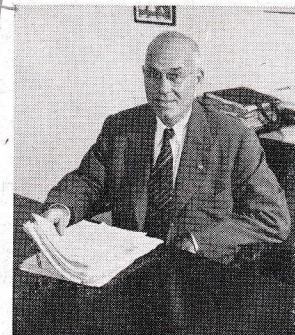
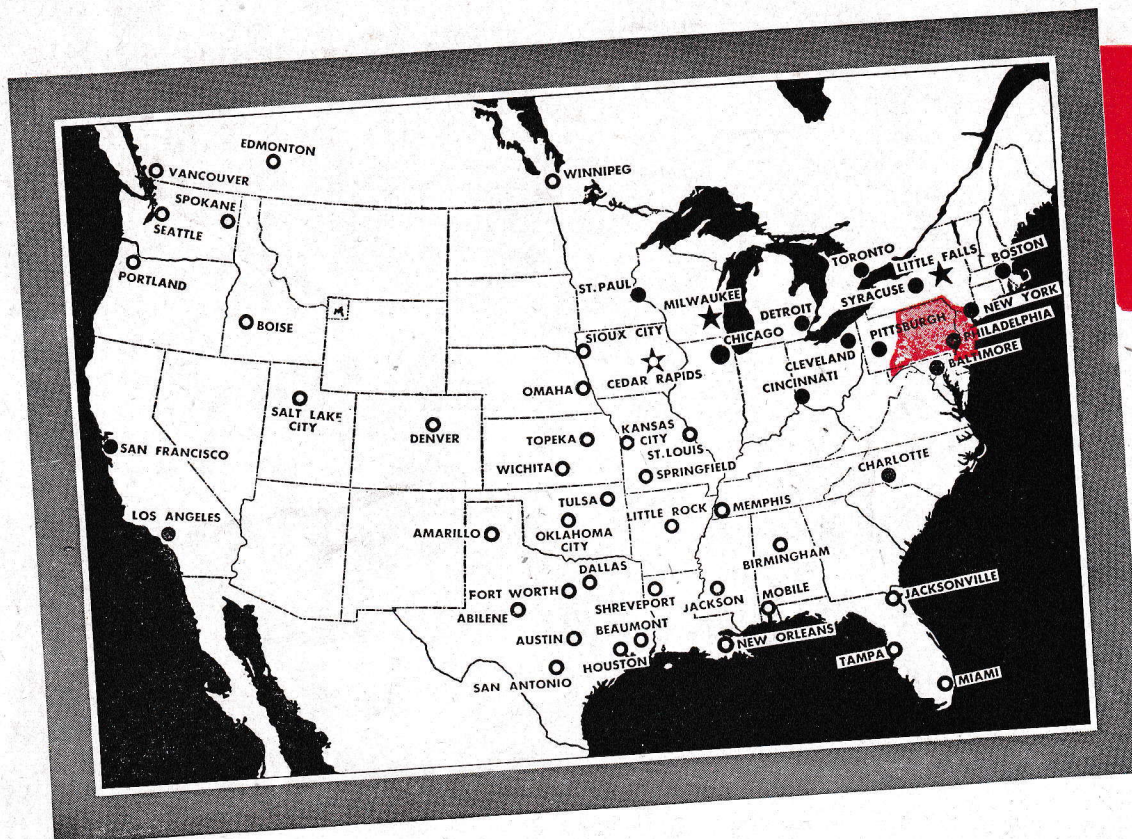


DAIRY



S. B. Ashmead, Philadelphia Branch Manager, has been connected with the dairy machinery and supply business for 28 years.

The Story of CHERRY-BURRELL'S PHILADELPHIA BRANCH

SINCE 1925 the well known address, 2324 Market Street, has been Philadelphia headquarters for dairymen throughout eastern Pennsylvania, most of New Jersey, the northern half of Delaware and the Maryland area around Cumberland, as portrayed on the U. S. map on this page. Here Cherry-Burrell maintains offices, warehouse, shop and shipping facilities on the four large floors of its building. With perhaps the exception of our Boston Branch it is the largest dairy supply warehouse anywhere in the East.

However, Cherry-Burrell was established in Philadelphia before 1925. A branch of the former Cherry-Bassett Company opened in Philadelphia in 1919. For a period of years this branch was the headquarters of Cherry-Bassett Company with other branches in Pittsburgh, Baltimore, Syracuse and New York City, distributing the J. G. Cherry Company line of machinery, the famous Milwaukee Filler, Blue Line Washer and other popular items and also manufactured many specialties in its Baltimore factory. Nineteen years ago Cherry-Bassett became a part of Cherry-Burrell Corporation.

S. B. Ashmead, branch manager since 1931, was connected with the previous organization when it Philadelphia



Front of our Market Street building showing three of the four large floors. A full length warehouse floor is below street level and extends to Ludlow Street in the rear where shipping and receiving entrance is located.



THERE IS A CHERRY-BURRELL FACTORY, BRANCH, WITHIN TEN MILES OF 90% OF THE PO

MACHINERY *and* SUPPLY HEADQUARTERS

Coast to Coast

The Ninth of a Series of Articles to better acquaint you with the nationwide dairy machinery and supply service offered by Cherry-Burrell Corporation and Associated Distributors.



Territory representatives. Front row, left to right: T. V. Kennedy, C. M. Depuy, S. E. Hudson, J. J. Murphy. Back row: Chas. Herman, M. E. Brandau, Gordon Hutchinson, Floyd Miller, Glenn Lichtenberg, Frank Klotz.

branch was established in 1919, and has devoted approximately 28 years to the dairy equipment business. A number of others have been members of the Philadelphia organization for many years, notably C. M. Depuy, T. V. Kennedy, S. E. Hudson, sales representatives; H. A. Palmer, Credit Manager; Robert Haycock, Branch Engineer; and George Harvey, Head Service Mechanic. In fact, the key men in sales, office and shipping now average 20 years or better as specialists with Philadelphia Branch. There are, at this time, 35 employees of the Philadelphia Branch.

Stocks, occupying thousands of warehouse square footage,



Above: Philadelphia's five-man warehouse and shipping crew assures quick service.



Below: One of the four warehouse floors. More and more items are now coming into stock.



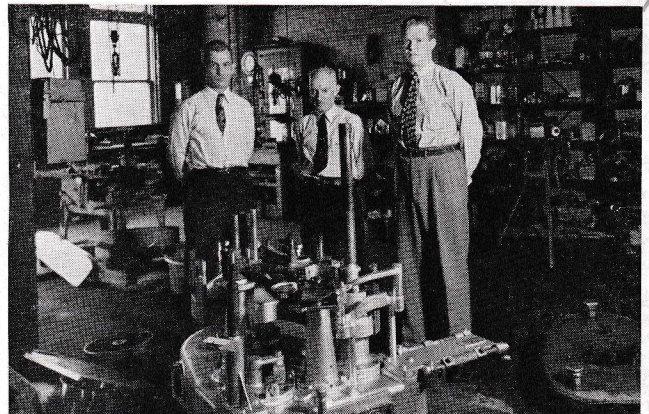
Above: Engineering Department. Robert Haycock (left) Branch Engineer; Kermit Kemmerer, Ass't.



Below: The Philadelphia office staff.

comprise repair parts, supply items, and machinery for distribution by rail, truck or parcel-post. Three different railroads have freight stations within two blocks of our building, the main Post Office is a minute's walk west on Market Street and, of course, truck loading and unloading is continuous at the Ludlow Street shipping entrance.

Hundreds of C-B customers from points as far as 300 miles distant are regular visitors to 2324 Market Street. If you are not yet among this group, we extend a hearty welcome. And of course, your letters, phone or wire messages are likewise cordially invited.



Below: Philadelphia's service department and its crew: Len Heverly, George Harvey and Joe Pape.

**WAREHOUSE, SALES OFFICE OR ASSOCIATE DISTRIBUTOR
POPULATION OF THE UNITED STATES AND CANADA**

PHILADELPHIA BRANCH DIRECTORY

Helpful information regarding the organization and the individuals you are writing or talking to.

Telephone: RIttenhouse 6-3820

Western Union: Cherry-Burrell WUX, Philadelphia, Pa.



Store and Office Hours

8:30 A. M. to 5:15 P. M.

Monday through Friday



Mail Address

2324 Market Street, Philadelphia 3, Pa.



One of these men is your Field Representative:

<u>Name</u>	<u>Location</u>	<u>Phone</u>
S. Ernest Hudson	Media, Pa.	6-0414
T. V. Kennedy	Philadelphia	WA 4-7148
G. A. Hutchinson	Wyncote, Pa.	Ogontz 5966
M. E. Brandau	Selinsgrove, Pa.	5474
Glenn Lichtenberg	Stroudsburg, Pa.	3994R
F. C. Miller	Emitsburg, Md.	170
C. R. Herman	Dallas, Pa.	591R19
G. E. Speicher	Media, Pa.	6-4132
Everett Evans	State College, Pa.	3533



Branch Manager — S. B. Ashmead



 **CHERRY-BURRELL CORPORATION**

Equipment and Supplies for Industrial and Food Processing

MACHINERY *and* SUPPLY HEADQUARTERS

Coast to Coast

The Thirty-ninth of a Series of Articles to better acquaint you with the nationwide dairy machinery and supply service offered by Cherry-Burrell Corporation and Associated Distributors.



Territory representatives. Back row, left to right: W. H. Klotz, F. C. Miller, C. R. Herman, E. E. Evans, T. V. Kennedy. Front row: F. A. Hutchinson, M. E. Brandau, G. E. Speicher, S. E. Hudson, G. J. Lichtenberg.

ected with the previous organization when its Philadelphia branch was established in 1919, and has devoted approximately 34 years to the dairy equipment business. A number of others have been members of the Philadelphia organization for many years, notably T. V. Kennedy, S. E. Hudson, sales representatives; H. A. Palmer, Credit Manager; and Robert Haycock, Branch Engineer. In fact, the key men in sales, office and shipping now average 20 years or better as specialists with Philadelphia Branch. There are, at this time, 41 employees of the Philadelphia Branch.

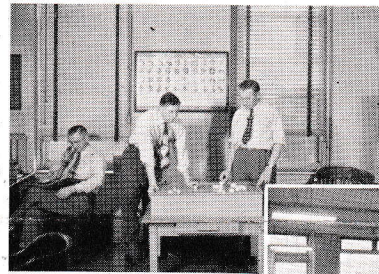
Stocks, occupying thousands of warehouse square footage,



Above: Philadelphia's five-man warehouse and shipping crew assures quick service.



Below: One of the four warehouse floors. More and more items are now coming into stock.



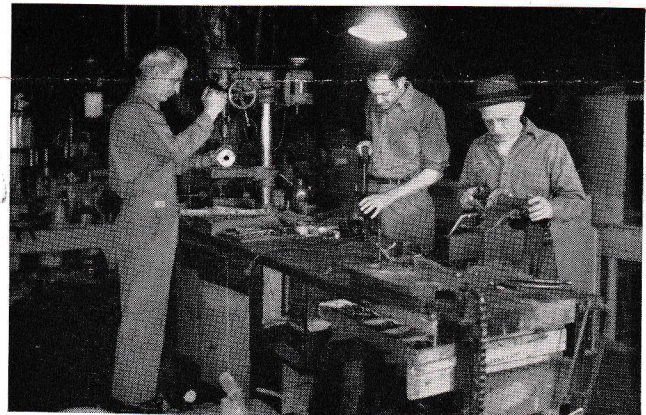
Below: The Philadelphia office staff.

Above: Engineering Department. Left to right: R. H. Haycock, C. W. Brill, K. C. Kemmerer.



comprise repair parts, supply items, and machinery for distribution by rail, truck or parcel-post. Three different railroads have freight stations within two blocks of our building, the main Post Office is a minute's walk west on Market Street and, of course, truck loading and unloading is continuous at the Ludlow Street shipping entrance.

Hundreds of C-B customers from points as far as 300 miles distant are regular visitors to 2324 Market Street. If you are not yet among this group, we extend a hearty welcome. And of course, your letters, phone or wire messages are likewise cordially invited.



Above: Philadelphia's service department and its crew. Left to right: L. Heverly, H. Harvey, G. Harvey.

**WAREHOUSE, SALES OFFICE OR ASSOCIATE DISTRIBUTOR
ULATION OF THE UNITED STATES AND CANADA**

ALL ORDERS, INCLUDING MACHINERY, ARE ENTERED BY BOB SNITE. HE MAKES CERTAIN YOUR ORDER IS PLACED RIGHT AND AT ONCE.

PHILADELPHIA BRANCH DIRECTORY

For quotations and descriptive information on Machinery or Supplies ~~and for ordering repair parts~~, ask for

LESTER BAILEY, *Sales Correspondent*



To place routine orders by telephone, ask for

TONY DiJOSEPH, *Store Sales*

And, when you favor us with a visit in person Tony will wait on you in our store area. He also corresponds with you, should there be a need, about returned items.



For expert information about new products in the supply line; new promotion plans for dairy processors; new designs for containers, caps; or to obtain special assistance by a manufacturer and to investigate anything that might be regarded as defective or unsuitable in our supplies, write or phone

"JAY" WOYTOWICH, *Supply Merchandiser*



"When was your order shipped?" All inquiries regarding orders in process should be directed to

TED PIKE, *Order Editor*



For information regarding machinery selection or application, contact

BOB HAYCOCK,
Machinery Merchandiser & Sales Engineer

Also, get in touch with Bob for a planning session with scale models if you are considering a new plant layout or survey, or revisions to present machinery arrangements.

Mechanical Service. For repair or installation work by our trained mechanics direct your messages to

KEN KEMMERER, *Sales Engineer*

If Bob should be away, his first assistant, Ken, will look after you promptly on all matters regularly assigned to Haycock.



To discuss blue prints, scale model layouts underway and similar business

CLARK BRILL, *Assistant Sales Engineer*
will efficiently handle your calls or letters.



Strayed shipments or damages in transit, credit problems or any information you desire about our invoices or your account will be promptly taken care of by

H. A. PALMER, *Credit Manager*

You will find "Hap" eager to help you in every reasonable way.



You may seldom need to get in touch with

ART LLEWELLYN, *Warehouse Supervisor*

but he pinch hits in most of the departments. Should you want special routing on your shipments or special packing, Art does his best. On occasion he has hastened in from his home during off hours to get an urgently needed repair part rushed out.



Have we made a mistake in spelling your name or used an incorrect street address? Have we annoyed you in any way by our clerical procedures? Please favor us by contacting

LOU VEIT, *Office Manager*

We sincerely hope the information contained in this folder will benefit you in getting better acquainted with the personnel we have who can serve you. Our intent is to make it easier for you to know WHO to call about WHAT. MAY WE HEAR FROM YOU?

S. B. ASHMEAD